

## VC4E SERIES SINGLE DECK ELECTRIC CONVECTION OVENS



- VC4ED** Solid state temperature controls adjust from 150° to 500°F. 60 minute timer with audible alarm.
- VC4EC** Computer controls with digital time and temperature readouts. 99-hour timer with audible alarm. Roast and Hold cycle. Six preset menu selections. Shelf I.D. programming.

### STANDARD FEATURES

- Stainless steel front, sides and top.
- Painted legs.
- Independently operated stainless steel doors with double pane windows.
- 12.5 total KW.
- 1/2 H.P. two speed oven blower-motor.
- Moisture vent damper control.
- Oven cool switch for rapid cool down.
- Porcelain enamel on steel oven interior.
- Five nickel plated oven racks with eleven rack positions.
- One year limited parts and labor warranty.

### OPTIONS

- Stainless steel legs.
- Casters.
- Five hour timer in place of 60 minute timer (Model VC4ED).
- Stainless steel open stand with storage rack.
- 480V/60 Hz/1 or 3 phase.
- Second year extended limited parts and labor warranty.

### ACCESSORIES

- Stainless steel rear motor enclosure.
- Extra oven rack(s).
- Rack hanger.
- Stainless steel drip pan.
- Stacking kit.



### SPECIFICATIONS:

Single section electric convection oven, Vulcan-Hart Model No. (VC4ED) (VC4EC). Stainless steel front, sides and top. Painted legs. Independently operated stainless steel doors with double pane windows. Non-sag insulation applied to the top, rear, sides, bottom and doors. Porcelain enamel on steel oven interior measures 29"w x 22<sup>1</sup>/<sub>8</sub>"d x 20"h. Two interior oven lights. Five nickel plated oven racks measure 28<sup>1</sup>/<sub>4</sub>" x 20<sup>1</sup>/<sub>2</sub>". Eleven position nickel plated rack guides with positive rack stops. Heated by electric solid sheath elements rated at 12 KW. Furnished with a two speed 1/2 H.P. oven blower-motor. Oven cool switch for rapid cool down. 208 or 240 volt, 60 Hz, 1 or 3 phase.

Exterior dimensions: 40"w x 42<sup>1</sup>/<sub>4</sub>"d x 56<sup>3</sup>/<sub>4</sub>"h on 25<sup>3</sup>/<sub>4</sub>" legs. Depth measurement includes door handles.

NSF listed. U L listed. U L listed to Canadian safety standards.

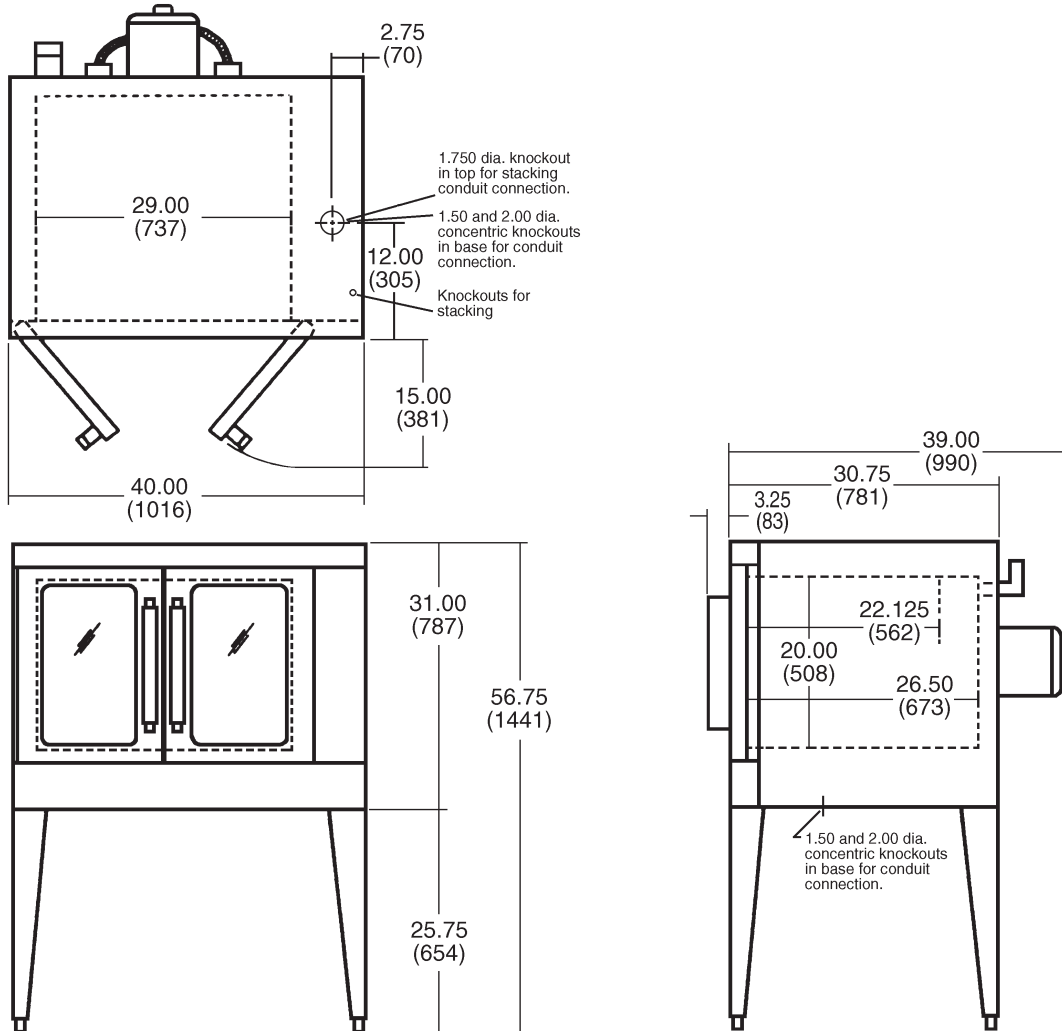


# VC4E SERIES

## SINGLE DECK ELECTRIC CONVECTION OVENS

### OPTIONAL VOLTAGES:

- 480 volt, 60 Hz, 3 phase.
- 220/380 volt, 50 Hz, 1 phase, 3 wire.
- 220/380 volt, 50 Hz, 3 phase, 4 wire.
- 240/415 volt, 50 Hz, 3 phase, 4 wire.



MODEL NO.	TOTAL CONN. KW	NOMINAL AMPS PER LINE WIRE												1 PHASE	
		3 PHASE LOAD KW PER PHASE			3 PHASE										
		X-Y	Y-Z	X-Z	208 VOLT			240 VOLT			480 VOLT				
					X	Y	Z	X	Y	Z	X	Y	Z		
VC4E	12.5	4	4	4.5	35	33	35	33	29	33	14	15	15	60	52

**NOTE:** In line with its policy to continually improve its products, Vulcan-Hart Company reserves the right to change materials and specifications without notice.

VULCAN-HART COMPANY, P.O. BOX 696, LOUISVILLE, KY 40201, TEL. 1-800-814-2028  
 502-778-2791 QUOTE & ORDER FAX: 1-800-444-0602